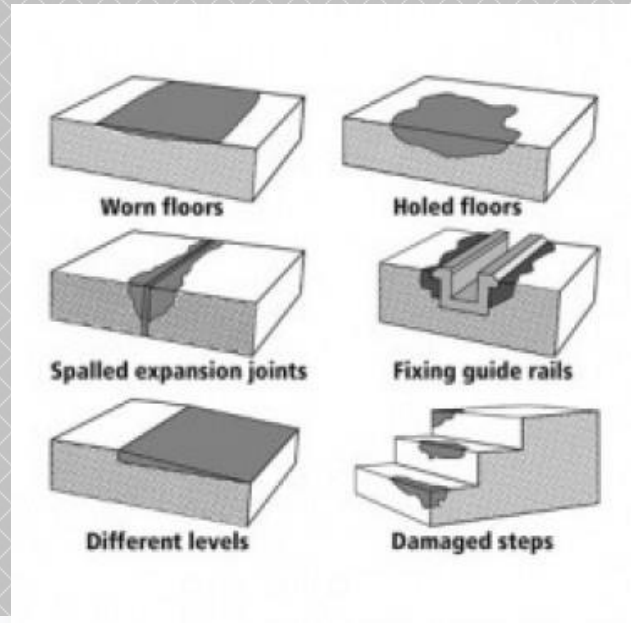


# DuroPro DuroPatch Industrial Concrete Repair Kits

**DuroPro DuroPatch** Epoxy Repair Kits are used in the most aggressive Industrial Environments. These kits are designed to repair, patch and protect old and new concrete. The epoxy resins used in these kits are virtually odorless. These products meet all EPA & VOC laws. DuroPatch Pro Epoxy meets USDA requirements.



- \*Make quick, permanent repairs to concrete.
- \*Patch cracks, spalled concrete and potholes.
- \*Excellent chemical resistance.
- \*Easy to mix and apply.
- \*Hand Trowel or Screed.
- \*Everything is packaged in a 5 gal. pail.
- \*Can be applied at ¼" – 1" thickness.
- \*Just mix Epoxy Base with Hardener then add selected aggregate.
- \*Standard colors: Clear and Gray.
- \*Each Kit yields approximately 16 sq. ft. @ ¼" thickness.

## PRODUCT USE

Traffic Aisleways  
Production Floors  
Ramps  
Loading Docks  
Warehouse Floors  
Dairies  
Power Plants  
Poultry Processing

Meat Packaging  
Breweries  
Cheese Plants  
Paper Mills  
Refineries  
Chemical Plants  
Food Processing



# DuroPro DuroPatch

Your best price, easy applications and extreme durability product

## DuroPro Price Comparison

### Grainger Epoxy Floor Patch

\$155.92 for 7.5 Sq Ft = **\$24.20 per ft.**

---

Sherwin Williams FasTop patch kit cost

\$158.69 for 5 sq ft = **\$24.41 per ft.**

---

### DuroPro DuroPatch 20 Sq Ft Kit

1-4 kits = \$18.62 per sq ft

5-9 Kits = \$16.80 per Sq Ft

10 or more = **ONLY \$15.90 per sq ft**

**SAVE UP TO 35%**

602-739-3425    [duroproengineeredproducts@gmail.com](mailto:duroproengineeredproducts@gmail.com)    [www.duroproengineeredproducts.com](http://www.duroproengineeredproducts.com)



**DuroPro Engineered Products**